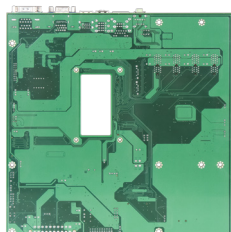
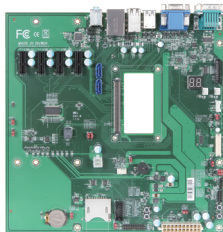


PCOM-CA00

Micro-ATX Form Factor Evaluation Carrier Board
For Type 10 COM Express® Rev 3.0 Module



FEATURES

- COM Express® carrier board is compatible with Portwell Type 10 COM Express® modules
- Micro-ATX form factor provides extra expansion slots and follows the standard mounting spaces
- Supports 2x USB 3.0, 8 x USB 2.0, 2 x SATAIII, 4 x PCIe x 1



Portwell PCOM-CA00 provides the COM-Express type 10 connector with Micro-ATX form factor. This carrier board passed all of Portwell evaluation testing. And it supports VGA, LVDS and DP display, and multiple I/O interfaces, including 4 x PCIe x 1, 2 x USB 3.0, 8 x USB 2.0, 2 serial ports, and 2 x SATA III devices. For more product features, please refer to the user manual or contact your distributor.

General

Product	PCOM-CA00
Form Factor	Type 10, Micro-ATX (244 x 244 mm)
Processor	Depends on Module
Core	
Freq.	
Turbo	
Cache	
Processor Graphics	
Graphics Base Frequency	
Graphics Max Dynamic Frequency	
HW Encoding	
HW Decoding	
HW Acceleration	
Processor TDP	
BIOS	
ECC Memory Supported	
Memory	

I/O Interface

I/O Interface			
SATA	2 x SATA III		
USB	2 x USB 3.0, 8 x USB 2.0		
Ethernet	1 x GbE		
Serial I/O	GPIO	10 bit GPIO	
	I ² C	Baud Rate : 400KHz	
	SMBus	Baud Rate : 100KHz	
	UART	2 Serial Port (Tx/Rx)	
PEG	N/A		
PCI Express	4 x PCIe x 1		
Display	Default	Options	Resolution
	LVDS	LVDS (24bit, dual channel)	up to 1920x1200 @60Hz
		VGA	up to 1920x1200 @60Hz
	DDI	DP	up to 1920x1600 @60Hz
Security	TPM		

MECHANICAL & ENVIRONMENT

Dimension	244 x 244 mm
Power DC IN	Micro-ATX
Storage Temperature	-40°C to 80°C
Operating Temperature	-40°C to 80°C
Certification	Contact us
MTBF	Over 100,000 hours at 40°C
Vibration	N/A
OS	Depends on module

ORDERING GUIDE

Product	Ordering P/N	Status
PCOM-CA00	AB1-3917	Available

BLOCK DIAGRAM

PCOM-CA00

