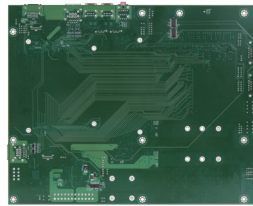
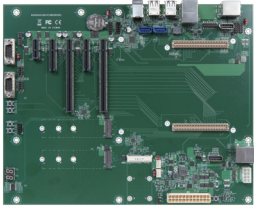


PCOM-C880

ATX size form factor evaluation carrier board for COM-HPC client module



FEATURES

- COM-HPC carrier board support COM-HPC client size A/B/C modules
- ATX size form factor provides extra expansions slot, and follows the standard space mounting
- Supports USB 3.2 Gen2, SATA, PCIe Gen4, 2.5G RJ45, Displayport
- Support wide temperature -40°C to 85°C
- Standard ATX PSU input



Portwell PCOM-C880 support the COM-HPC client type module with ATX size form factor. This carrier board passed the most of Portwell evaluation testing. It supports DP display, and multiple I/O interfaces, including PCIe, RJ45, USB 3.2, SATA, UART. For more product features, please contact your distributor or refer to the datasheet/user manual.

General

Product	PCOM-C880
Form Factor	ATX size (305mm x 244mm)
Supported Module	COM-HPC client , size A / B / C
General Function	RTC battery Postcode display BIOS SPI Socket Power BTN / Reset BTN Lid BTN / Sleep BTN RapidShutdown BTN
Audio codec	Realtek ALC888s

I/O Interface

SATA	2 x SATA III	
USB	4x USB 3.2 Gen2 port + 4x USB 2.0 port	
Ethernet	2x 2.5Gbe RJ45	
PCI Express	2x PCIe 4.0 x16 2x PCIe 4.0 x4 2x M.2 M key 1x PCIe x1 (Route to BMC lane)	
Display	Default	Options
	DDI	3x DP
	eDP	1x DP (Route to standard DP for evaluation purpose)
Legacy I/O	GPIO	12x GPIO
	I ² C	2x I ² C header
	SMBus	1x SMBUS header
	UART	2x DB9 UART (Tx/Rx)
	GP SPI	1x GP SPI header
Others	Audio jack 2x FAN (1x support PWM control) MIPI-CSI (for signal measurement purpose)	

MECHANICAL & ENVIRONMENT

Dimension	ATX 305mm x 244mm
Power DC IN	ATX 24 pin ATX 8 pin
Storage Temperature	-40°C to 85°C
Operation Temperature	-40°C to 85°C
Certification	TBD
MTBF	TBD
Vibration	TBD

ORDERING GUIDE

Product	Ordering P/N	Status
PCOM-C880	AB1-3L34Z	in development

BLOCK DIAGRAM

