
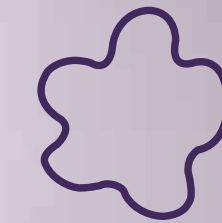




Smart Retail 

Public Information 

Easy to use



Connectivity Display System

The Age of Connection

Affordable

Fashion style



www.portwell.com.tw

IP65

Connectivity

Flexible



 KIOSK

The Internet of Things (IoT) makes it possible to link every single device together, so our endless imagination now becomes a limitless possibility for the future. With IoT infrastructure, it's possible to change how we manufacture, improve how we live and even mold how we receive information into a smart pattern.

IoT is no longer just a topic of conversation. Combined with different ideas, applications and the construction of infrastructure, it becomes real and burgeoning market. We have seen many leading IoT trials all worldwide. The massive adoption of this groundbreaking technology is not too far away. What follows are some feasible disciplines as example of viable IoT applications.

Smart Retail

Smart Retail is a perfect application and Amazon Go is an excellent example. Once again, connectivity plays an important role. Without connectivity IoT provides, the AI system will have no source to analyze; customers cannot receive push advertisements based on the result of calculations. And something as simple and convenient as self-checkout becomes impossible if there is no way to verify one's identity. The importance of IoT is obvious in such scenario.

KIOSK

Combining with the convenience and versatility of the Internet, it's becoming more and more common for people to turn to self-service machine to fulfill their needs. The application is already popular in restaurants, transportation rental system, library and many other situations where convenience and speedy transaction are key. The development in kiosks is thriving and increasing. We look forward to seeing future growth in this discipline.

Public Information (POI)

Information is key and people want it now and they want it fast. The public information system is the solution for them. This might be the requirement in transportation hubs like train station or airport. It might also happen in government facilities. Or it might be the demand in entertainment environment as department store, amusement park, and so forth. IoT provides a complete network for information providers and clears the obstacles to information interaction.

Americas
American Portwell
 (Fremont, CA)
 44200 Christy St., Fremont, CA 94538, USA
 Tel: +1-510-403-3399
 Fax: +1-510-403-3184
 E-mail: info@portwell.com
 http://www.portwell.com

Portwell Latin America
 (Brazil)
 Rua Engenheiro Roberto Fischer, 208, Sala
 No.3-Parque Industrial software
 CEP 81250-025-CIC- Curitiba- Brazil
 Tel: +55(41)-3121-7200
 Tel: +55(41)-3121-7201
 http://www.portwell.com.br

China
Shanghai Portwell
 (201612), Room 1303-1, Building 33,
 No.258, Xinhuan Highway, Songjiang
 District, Shanghai
 Tel: +86-21-5771-2505
 Fax: +86-21-5772-2965
 E-mail: info@portwell.com.cn
 http://www.portwell.com.cn

Japan
Portwell Japan, Inc.
 (Tokyo)
 〒112-0011 4-27-10, Sengoku,
 Bunkyo-ku, Tokyo, Japan
 Tel: +81-3-6902-9225
 Fax: +81-3-6902-9226
 E-mail: info@portwell.co.jp
 http://www.portwell.co.jp

Portwell Japan, Inc.
 (Osaka)
 〒532-0004 Ste.501 Nippo Shin-osaka
 Dai-2 Bldg, 1-8-33 Nishi-Miyahara,
 Yodogawa-ku, Osaka Japan
 Tel: +81-6-4807-7721
 Fax: +81-6-4807-7720
 E-mail: info@portwell.co.jp
 http://www.portwell.co.jp

Korea
Portwell Korea, Inc.
 O-Biz Tower 1901, No.126,
 Beolmal-ro, Dongan-gu, Anyang-si,
 Gyeonggi-do, Korea, 431-0660
 Tel: +82-31-450-3043
 Fax: +82-31-450-3044
 E-mail: info@portwell.co.kr
 http://www.portwell.co.kr

Europe
European Portwell
 Schillingweg 3, 2153 PL
 Nieuw Vennepp, The Netherlands
 Tel: +31-252-620790
 Fax: +31-252-621325
 E-mail: info@portwell.eu
 http://www.portwell.eu

Portwell Deutschland
 GmbH
 Otto-Hahn-Str. 48, D-63303 Dreieich
 Tel: +49-6103-3008-0
 Fax: +49-6103-3008-199
 E-mail: info@portwell.de
 http://www.portwell.de

Portwell UK Ltd.
 Office TH2
 Trident House, Trident Park Basil Hill
 Road, Didcot, OX11 7HS, UK
 Tel: +44-1235-750760
 Fax: +44-1235-750761
 E-mail: info@portwell.co.uk
 http://www.portwell.co.uk

India
Portwell India
 Technology
 7/3, 3rd Floor, Jeet
 Dynasty, Swamy Vivekananda Road, Nagav
 arapalya, Bangalore-560093, India
 Tel: +91-80-407-62700
 E-mail: info@portwell.in
 http://www.portwell.in

Portwell, Inc. (Headquarters)
 No. 242, Bo'AI St., Shu-Lin Dist,
 New Taipei City 238, Taiwan
 Tel: +886-2-77318888
 Fax: +886-2-77319888
 E-mail: info@portwell.com.tw
 http://www.portwell.com.tw

Portwell, Inc. (Headquarters)
 No. 242, Bo'AI St., Shu-Lin Dist,
 New Taipei City 238, Taiwan
 Tel: +886-2-77318888
 Fax: +886-2-77319888
 E-mail: info@portwell.com.tw
 http://www.portwell.com.tw

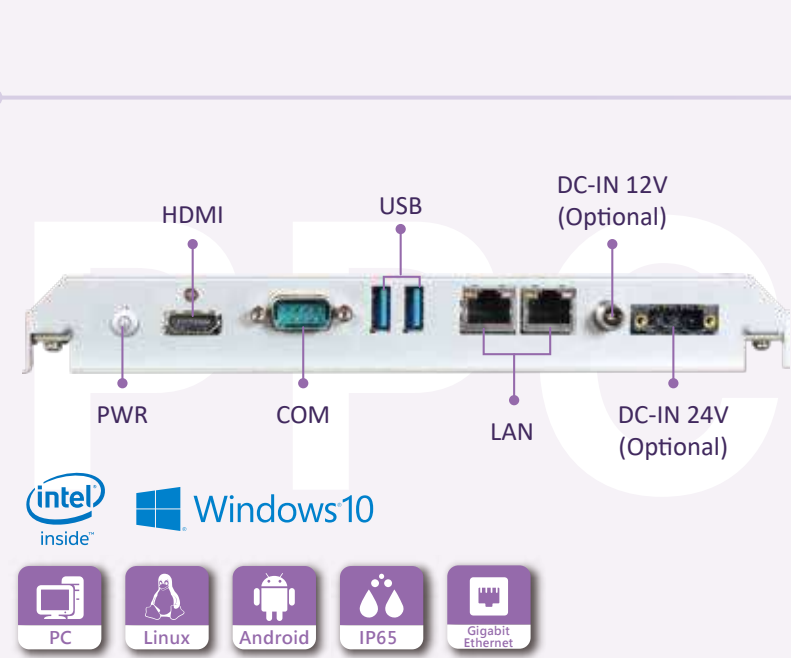
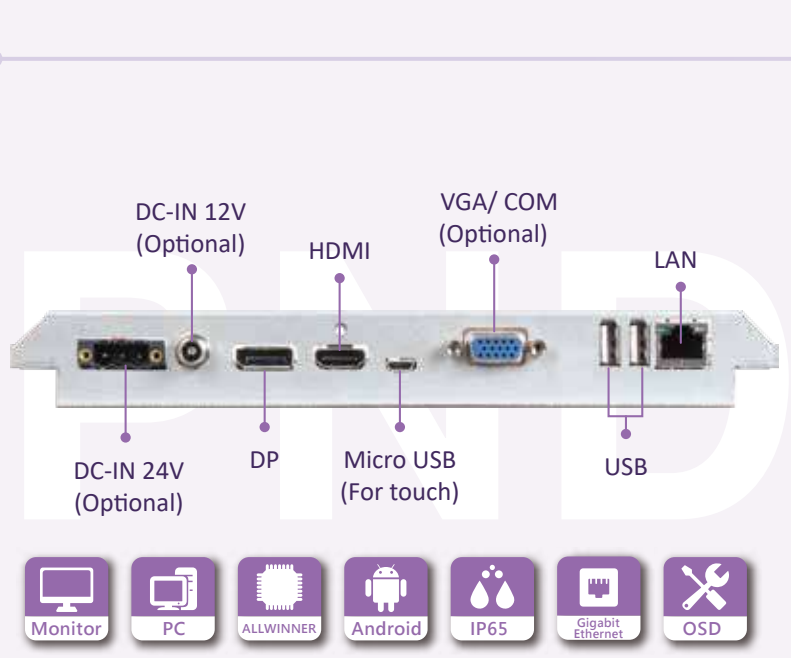
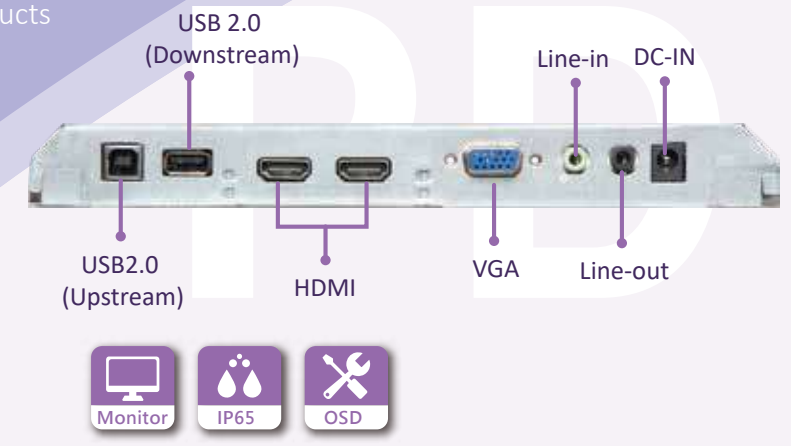
LEAD

The Client-Cloud Future



Why LEAD

LEAD series is a family of brand-new panel PC products from Portwell. As an Associate member of the Intel® Internet of Things Solutions Alliance, Portwell is already aware of the trend that there are increasing demands in system and the future of IoT. Now we hope to LEAD the market and provide our customers with the most valuable products with incredible flexibility and selectivity.



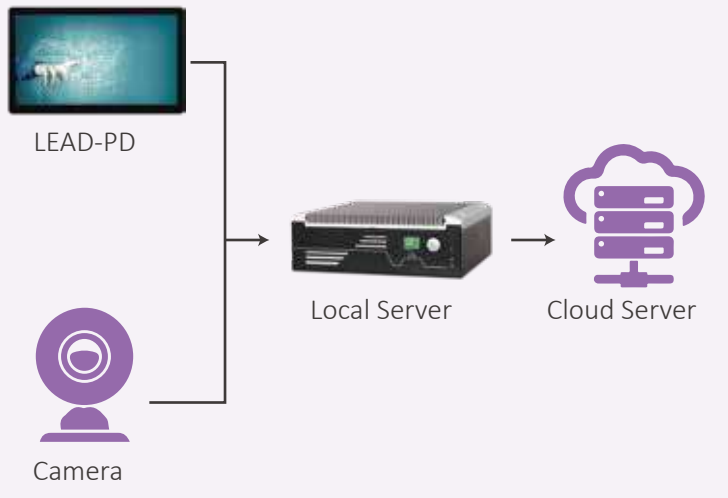
LEAD-PD Series

As the entry product of LEAD series, Portwell Display or PD shares the fantastic stylish appearance and design common to Portwell products. This allows our customers to adopt the PD in the environment that needs to face end users. The full HD and ten-point multi-touch panel can provide the best user experience. The various I/O allows our customers to input information from different sources. This low-cost entry monitor will be your best choice for the occasions that don't need any computing power.



New Experience in Retail

What would you expect when entering a retail shop? When you arrive at the store, the camera will catch your image and analyze your gender, age and other physical characteristics with the local server. The information will be compared with the data base. According to the result, the system would be able to provide you with customized advertisement, promotion and the location of the merchandise. Afterward, the system should lead you to the fastest check-out desk to avoid waiting. Or if you don't want to carry all the bags, why not just tell the system to ship them back to your home? Let the friendlier and more customized shopping experience entertain your day.



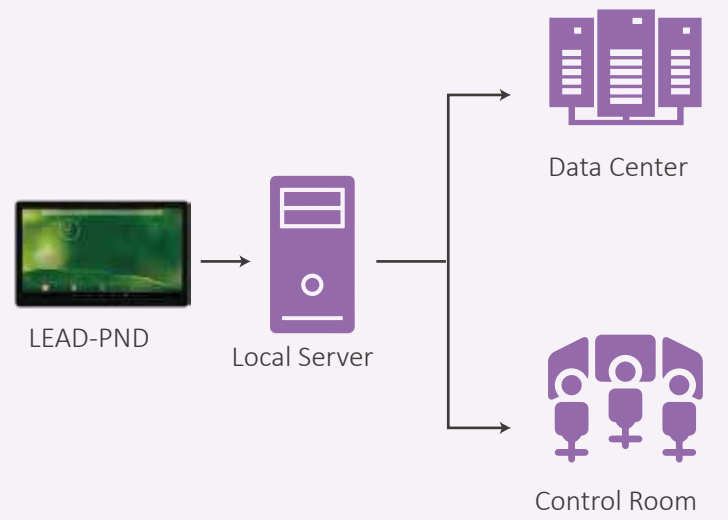
LEAD-PND Series

Portwell Networking Display or PND has network connection ability with LAN port which adopts Gigabit Ethernet. With Allwinner A83T, PND is equipped with basic computing ability compared to PD. Combining the two features, PND is suitable for those who want to introduce IoT concept into their applications or environments. The OS adopts Android system, which provides users with high flexibility to fulfill their own software requirement. The VGA/HDMI/DP ports enclose the most common signal inputs now. PND provides users with the ability to control the OSD function by Tx/Rx of RS232 which further enhances the ability of PND and helps customers to easily adopt an IoT scenario.



No Maze in Airport

Have no idea where you are, what to do next in the flood of flight information? What if the airport information can be personalized just for you? In the future, once arriving the airport, besides the huge information signage, more small panel PCs are waiting for you. By typing or selecting your flight number, the system will let you know where to check in on the map, how long the queue is, expecting time for custom check, location and distance of the gate. Instead of a nightmare to navigate, the airport becomes a personal and pleasant journey.



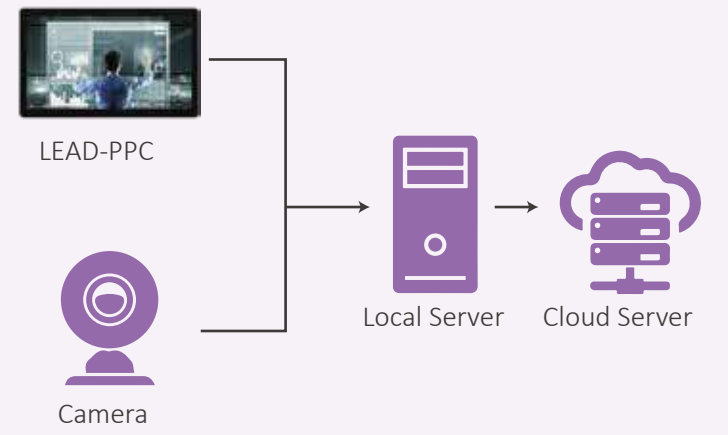
LEAD-PPC Series

Portwell Panel PC or PPC provides the highest computing power for our customers by adopting Intel Apollo Lake dual-core processor E3930. By offering an optional operating system, users can choose either Win 10, Android or Linux Ubuntu, which provides them with incredible flexibility. The Gigabit Ethernet is available and can be up to two ports. The bezel-free characteristic makes it also suitable to be placed at occasions that face end customers. The serial port control ability makes it still good for conventional industrial automation application.



Imagination of Future Exhibition

Get trapped in the exhibition hall? Let LEAD help you! With face recognition software, the building can remember you. Once you search a specific booth by the system, if you get lost in the hall, find the nearest LEAD. The system will recognize you and redirect you to your destination. No more struggling for finding the right booth. Now you can spend that time enjoying the event.



Quick Selection Guide

Model Name	LEAD-PD-2150 LEAD-PD-2360	LEAD-PND-2150-AV LEAD-PND-2360-AV	LEAD-PND-2150-AC LEAD-PND-2360-AC	LEAD-PND-2150-BV LEAD-PND-2360-BV	LEAD-PND-2150-BC LEAD-PND-2360-BC	LEAD-PPC-2150-A LEAD-PPC-2360-A	LEAD-PPC-2150-B LEAD-PPC-2360-B
Part Number	AL8-3081 AL8-3082	AL6-3276 AL6-3272	AL6-3275 AL6-3271	AL6-3274 AL6-3270	AL6-3273 AL6-3269	AL6-3265 AL6-3267	AL6-3266 AL6-3268
Display							
LCD Size	21.5" / 23.6"		21.5" / 23.6"		21.5" / 23.6"		
Resolution	FHD 1920 x 1080		FHD 1920 x 1080		FHD 1920 x 1080		
Brightness	250 cd/m ²		250 cd/m ²		250 cd/m ²		
Contrast Ratio	1000: 1		1000: 1		1000: 1		
Panel Type	TN		TN		TN		
Viewing Angle	170° (H) / 160° (V)		170° (H) / 160° (V)		170° (H) / 160° (V)		
Touch Screen	Projected Capacitive Multi-Touch		Projected Capacitive Multi-Touch		Projected Capacitive Multi-Touch		
System							
SOC	Allwinner A83T Octa-Core Cortex™ A7 CPU				Intel® Atom® Dual-Core x5-E3930 (1.3GHz, up to 1.8GHz)		
Memory	1GB DDR3L on board				8G DDR3L/1600 SO-DIMM		
LAN Chip	N/A, Monitor Only				Realtek® RTL8211E		
Audio Codec	N/A, Monitor Only				Allwinner AXP813		
Storage Device	N/A, Monitor Only				16G eMMC on board		
OS	N/A, Monitor Only				Android 6.0		Windows 10 IoT / Android 6.0 / Linux™ Ubuntu 16.10
I/O Interface							
Serial Port	N/A		N/A		1 x Tx/Rx for OSD function	N/A	1 x Tx/Rx for OSD function
Display	Input: 2 x HDMI, 1 x VGA		Input: 1 x HDMI, 1 x DP, 1 x VGA		Input: 1 x HDMI, 1 x DP	Input: 1 x HDMI, 1 x DP, 1 x VGA	Input: 1 x HDMI, 1 x DP
USB	Upstream: 1 x USB 2.0 Type B Downstream: 1 x USB 2.0 Type A		2 x USB 2.0 1 x Micro USB for Touch only		2 x USB 3.0		
Ethernet	N/A		1 x Gigabit Ethernet		2 x Gigabit Ethernet		
Audio	2 x 2W Speaker, 1 x Line out, 1 x Line in		2 x 3W Speaker		2 x 3W Speaker		
OSD Key	Power / Menu / Right / Left / Auto		Power / Menu / Right / Left / Auto		N/A		
Power							
Power Input	DC 20V via DC Jack		DC 12V via DC Jack		DC 24V via 3-pin terminal block connector		DC 12V via DC Jack DC 24V via 3-pin terminal block connector
Power Supply	45W AC-DC Adapter, Power Cord		40W AC-DC Adapter		60W AC-DC Adapter		65W AC-DC Adapter 60W AC-DC Adapter
Environmental							
Mounting (mm)	Standalone; VESA® Mount 75 x 75		Standalone; VESA® Mount 75 x 75		Standalone; VESA® Mount 75 x 75		
Accessory	1 x HDMI cable, 1 x USB 2.0 Type B to A cable		1 x VGA cable	N/A	1 x VGA cable	N/A	N/A
OP / Storage Temperature	0~40°C / -25~-55°C		0~50°C / -20~-60°C		0~50°C / -20~-60°C		
IP Protection	IP65 (Front)		IP65 (Front)		IP65 (Front)		
Certificate	CE / FCC Class B		CE / FCC Class A		CE / FCC Class B		