

# PIPC-06003

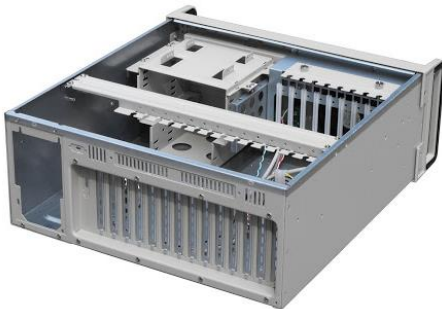
4U 19" Rackmount Industrial chassis with 14-slot Backplane and motherboard version & Redundant Power supply support



## FEATURES

- 1-12025 cooling fan
- Front 2-USB, Power & Reset Button
- Support ATX/ Micro-ATX/ Mini-ITX Motherboard
- Support up to 14-slot backplane
- Flexibility to use PS2 Formfactor PSU and Redundant PSU
- Front Power & HDD LED

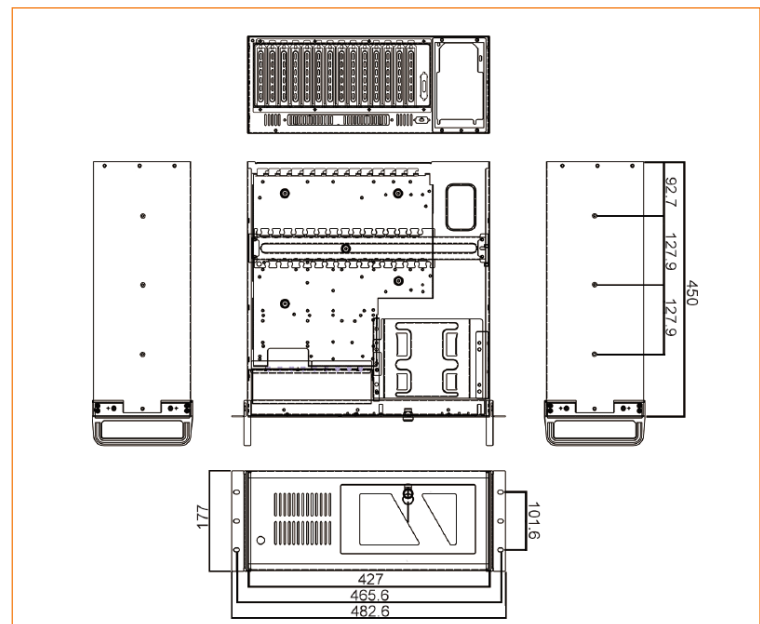
## IMAGES



## SPECIFICATIONS

Component	Specification
Dimension (DxWxH)	450mm x 427mm x 177mm
Material	1.2mm SGCC Zinc-Coated Steel
Driver bays	2x3.5" HDD Bays, 1x3.5" FDD Bay, 2x5.25" CD-ROM Bays
Cooling Fan	1x12025 fan
Expansion Space	7-Slot MB Version 14 slot BP Version (Optional)
M/B Form Factor	MB-ATX size and Micro-ATX Size BP -ISA/PCI/PICMG Industrial board
System Control	Power/ Reset/ KB-LK switch, Power / HDD/KB-LK LED
PSU Form Factor	PS2 Power supply or Redundant Power Supply

## DIMENSIONS



## ORDERING INFO

<b>PIPC-06003-MB</b>	<b>PIPC-06003</b> 4U Rackmount Chassis, Power/Reset, LED, 2-USB, 2-3.5inch, 2-5.25inch, 7-Slot MB Version
<b>PIPC-06003-MB/BLK</b>	<b>PIPC-06003</b> 4U Rackmount Chassis, Power/Reset, LED, 2-USB, 2-3.5inch, 2-5.25inch, 7-Slot MB Version, BLACK
<b>PIPC-06003-BP</b>	<b>PIPC-06003</b> 4U Rackmount Chassis, Power/Reset, LED, 2-USB, 2-3.5inch, 2-5.25inch, 14-Slot Backplane & PICMG
<b>PIPC-06003-BP/BLK</b>	<b>PIPC-06003</b> 4U Rackmount Chassis, Power/Reset, LED, 2-USB, 2-3.5inch, 2-5.25inch, 14-Slot Backplane & PICMG, BLACK