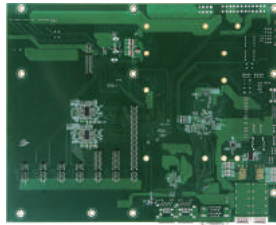
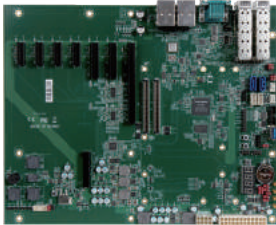


PCOM-C702

ATX Form Factor Evaluation Carrier Board for COM Express
Revision 3.0 Type VII Module with 4x 10GbE Support with
Inphi CS4223 PHY



FEATURES

- Support both AT and ATX mode
- 10G PHY: Inphi CS4223
- 1x GbE, 4x 10GbE SFP+
- 32 PCIe Lanes, 2 SATA III, 4 USB 3.0, 4 USB 2.0



Portwell PCOM-C702 is designed with ATX form factor with COM Express Type VII row connectors; it's suitable for evaluation testing of Portwell's Type VII COM Express modules with 4x USB 3.0, 32x PCIe lanes, 4x 10 Gigabit Ethernet, and BMC AST2500 support. Portwell is able to provide carrier board design guide for customer to design their carrier board as a reference. This can shorten customer's carrier board developing time and make the development quick and easy. The PCOM-C702 provides COM Express Type VII support in addition to fulfill wide range of device connectivity for prototype and flexibility .

General

| | |
|--------------------------------|-------------------------------|
| Product | PCOM-C702 |
| Form Factor | ATX Form Factor (305 X 244mm) |
| Processor | Depends on module |
| Core | |
| Freq. | |
| Turbo | |
| Cache | |
| Processor Graphics | |
| Graphics Base Frequency | |
| Graphics Max Dynamic Frequency | |
| HW Encoding | |
| HW Decoding | |
| HW Acceleration | |
| Processor TDP | |
| BIOS | |
| ECC Memory Supported | |
| Memory | |

I/O Interface

| | | |
|-------------|--|--------------------------|
| SATA | 2x SATA III (Port 0/1) | |
| USB | 4x USB 3.0 (Port 0~3) 4x USB 2.0 (Port 0~3) | |
| Ethernet | 1x GbE, 4x 10GbE SFP+ | |
| Serial I/O | GPIO | 8 bit GPIO (4 in, 4 out) |
| | I ² C | 1 |
| | SMBus | 1 |
| | UART | 2 |
| PCI Express | 1x PCIe Gen3 x16 3x PCIe Gen3 x4 4x PCIe Gen3 x1 | |
| Display | Unavailable in Type7 | |
| Security | N/A | |

MECHANICAL & ENVIRONMENT

| | |
|-----------------------|---|
| Dimension | 305 X 244mm |
| Power DC IN | Single Power: +12V DC PSU connector available AT/ATX mode |
| Storage Temperature | -40°C to 85°C |
| Operation Temperature | -40°C to 85°C 0°C to 70°C for BMC and 10G |
| Certification | Contact us |
| MTBF | Contact us |
| Vibration | Contact us |
| OS | Depends on Module |

ORDERING GUIDE

| Product | Ordering P/N | Status |
|-----------|--------------|-----------|
| PCOM-C702 | AB1-3J60Z | Available |

BLOCK DIAGRAM

PCOM-C702

ZR0

COM Express Type 7
Carrier Board

AT/ATX Form
Factor

-40 ~ +80° C
0 ~ +70° C (BMC, 10G)

